



FIRENET ADAPTING TO WILDFIRE

STAKEHOLDER ADVISORY COMMITTEE - MEETING #4
FEB 18, 2022

RECENT EVENTS

The most impactful wildfire event in Oregon history led to sweeping changes in state programs focused on wildfire and risk management

FIRE → POLICY → ACTION → OBSTACLES

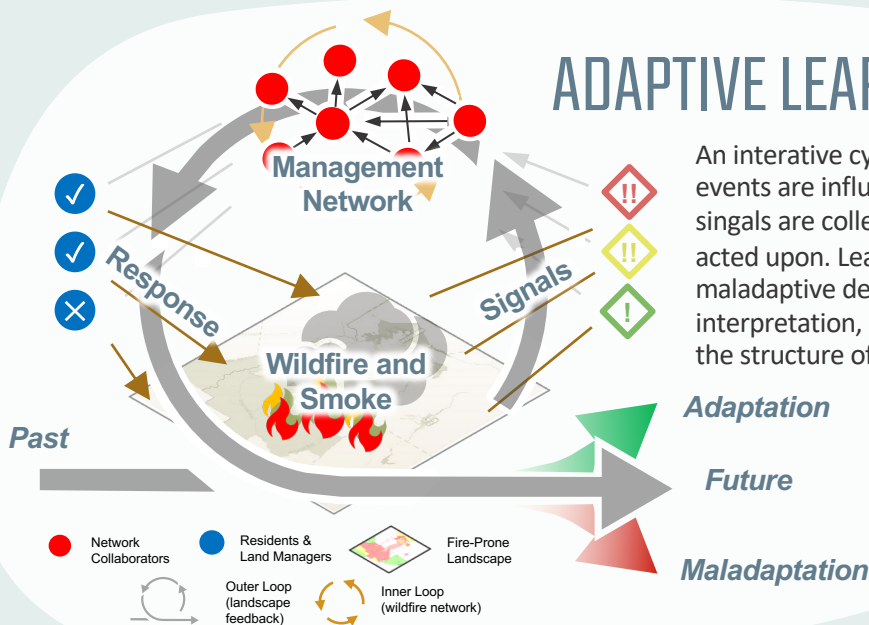
2020 fires burn one million acres, destroying hundreds of homes.

2021 state bill funds better preparedness measures across Oregon

Aggressive timeline leaves little space for innovation despite funds

Funding restrictions limits applicability; distrust hampers new programs.

ADAPTIVE LEARNING

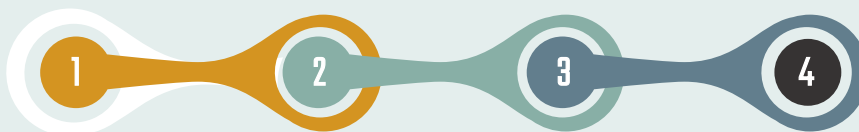


An interactive cycle where the response to events are influenced by how landscape signals are collectively interpreted and acted upon. Learning may be adaptive or maladaptive depending on this interpretation, which is shaped by trust and the structure of working relationships.

Adaptation

Future

Maladaptation



Roles

How individual roles help achieve a fire adapted future



Influence

How social influence impacts fire outcomes



Networks

Exploring the fire network in Central Oregon



Strategies

Leveraging our connections to adapt to fire

SCALING ADAPTIVE STRATEGIES

Challenge begets innovation and while a recent diluge of funds made obvious limiations in the current system to effectively scale, it also illuminated directions for future investment. Funding will always be episodic yet shoots planted yesterday are a reliable indicator where adaptive actions occur. Investments in social capital are necessary.

